

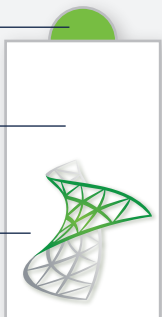
# REsolute™ Reclosure Label by



**EASY OPEN  
LIFT TAB**

**TRANSPARENT  
OR WHITE  
LABEL AREA**

**HIGH IMPACT  
GRAPHICS**



## EASY OPEN FUNCTIONALITY

**DEADENED ADHESIVE**

**RESEAL ADHESIVE**

**TAMPER EVIDENT  
FEATURE**

**OXYGEN & MOISTURE  
BARRIER PROTECTION**



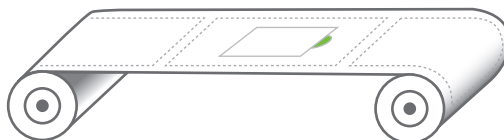
## WIDE RANGE

SHAPES, SIZES & DESIGNS

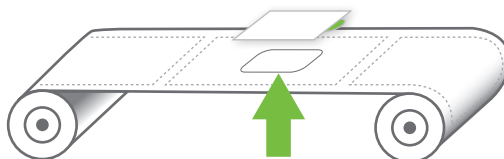
- REsolute™ Reclosure Label
- REsolute™ Semi-Rigid Reclosure Label
- REsolute™ Rigid Reclosure Label



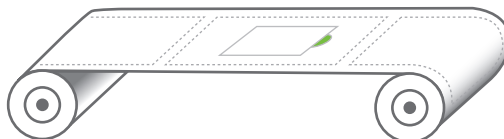
APPLIED DIRECTLY TO THE  
EXISTING FLEXIBLE PACKAGING MATERIAL



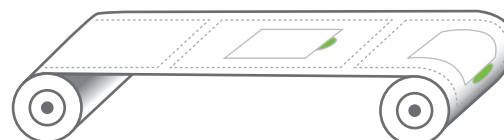
**DIE CUT**  
THROUGH THE FLEXIBLE PACKAGING MATERIAL



**HERMETIC SEAL**  
IS PROVIDED BY THE LABEL



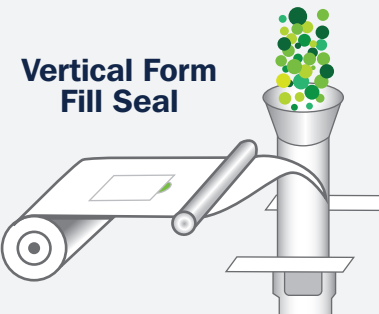
CONVERTED PACKAGING MATERIAL IS REWOUND  
**READY FOR BRAND OWNER APPLICATION**



Easy Application of **REsolute™ Reclosure Label**  
to Existing Packing Materials, Designs, and Formats



**Thermoform**



**Vertical Form  
Fill Seal**



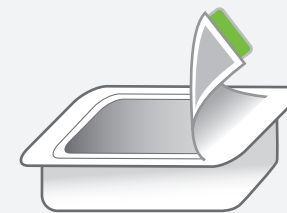
**VFFS**



**HFFS**



**LIDDING**



**THERMOFORM**