



FILE SUBMISSION GUIDELINES

To ensure optimal print quality and expedite the proofing process, we kindly request that submitted files adhere to the following specifications. Files that do not meet these requirements may be rejected and require modification—either by the sender or, if requested, by Lauterbach Group at the sender's expense.

GENERAL GUIDELINES

Print File Submission	File Size Limit: Maximum 512 MB Accepted File Formats: PDF or Adobe Illustrator (.AI) only Ensure that file is not encrypted and has pdf compatibility
Art File Setup	Trim Box Settings: <ul style="list-style-type: none">• The trim box must match the size of the printed piece• Objects within the trim box are subject to preflight scanning• Remove unintended objects to avoid file rejection Bleed Requirements: <ul style="list-style-type: none">• Labels: 1/16" bleed on all sides Safe Area for Critical Elements: <ul style="list-style-type: none">• Maintain a minimum of 1/16" clearance from seals and die cuts for critical artwork and text
Color and Resolution	Non-Printing Elements: <ul style="list-style-type: none">• Place these elements on a separate layer• Set separation to <i>Technical</i> and enable <i>Overprint</i> Color Mode: CMYK only (RGB or Lab not accepted) Image Resolution: Minimum 300 DPI for all embedded images
Special Elements	Spot Colors for Special Effects: <ul style="list-style-type: none">• Use separate layers for elements requiring spot white or spot varnish• Name spot colors clearly (e.g., "White", "Gloss Varnish")• Set these layers to <i>Overprint</i>
Text and Fonts	Font Management: Fonts must be embedded or supplied with the file
Barcode Specifications	Design Requirements: <ul style="list-style-type: none">• Barcodes should be one-color vector elements• Recommended minimum size: 80% magnification
Variable Data Preparation	Handling Instructions: <ul style="list-style-type: none">• Remove or clearly label placeholder text (e.g., "Variable", "FPO", "Do Not Print") if variable data will be added later by the end user• If Lauterbach Group is printing variable data, any databases and/or seed files should be provided
Design Software Recommendations	Unsupported Software <ul style="list-style-type: none">• Canva is not supported due to potential visual inconsistencies during processing



FILE SUBMISSION GUIDELINES

FLEXOGRAPHIC PRINTING GUIDELINES

Minimum Font Sizes	Printed text: 4 pt Reversed-out text: 6 pt
Trapping	Apply trapping when using spot colors to compensate for print movement
Minimum Dot	Due to inherent limitations of flexographic printing, dot percentages below 1.5% cannot be adequately printed and as such, will either be bumped up or dropped entirely

POUCH GUIDELINES

File Setup	Ensure all sides, including gusset, are included on one page
Bleed Requirements	Top & Bottom: 4 mm Left & Right: 2 mm



FILE SUBMISSION GUIDELINES

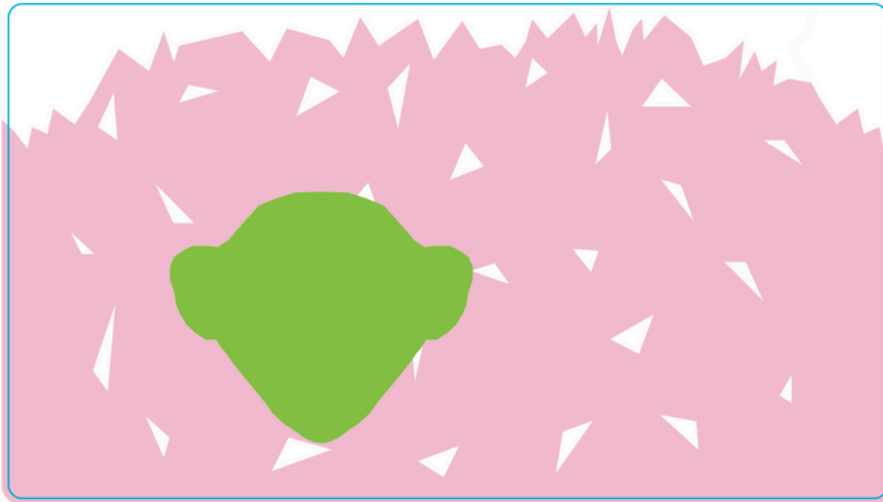
FILE SETUP

Dieline in technical separation, set to overprint

Art bleeds: 0.125" around trim



Vector element barcode
Not a raster image



White on separate layer and
separation, set to overprint

Clear/Metallic areas
knocked out of white ink

Varnish on separate layer
and separation, set to
overprint



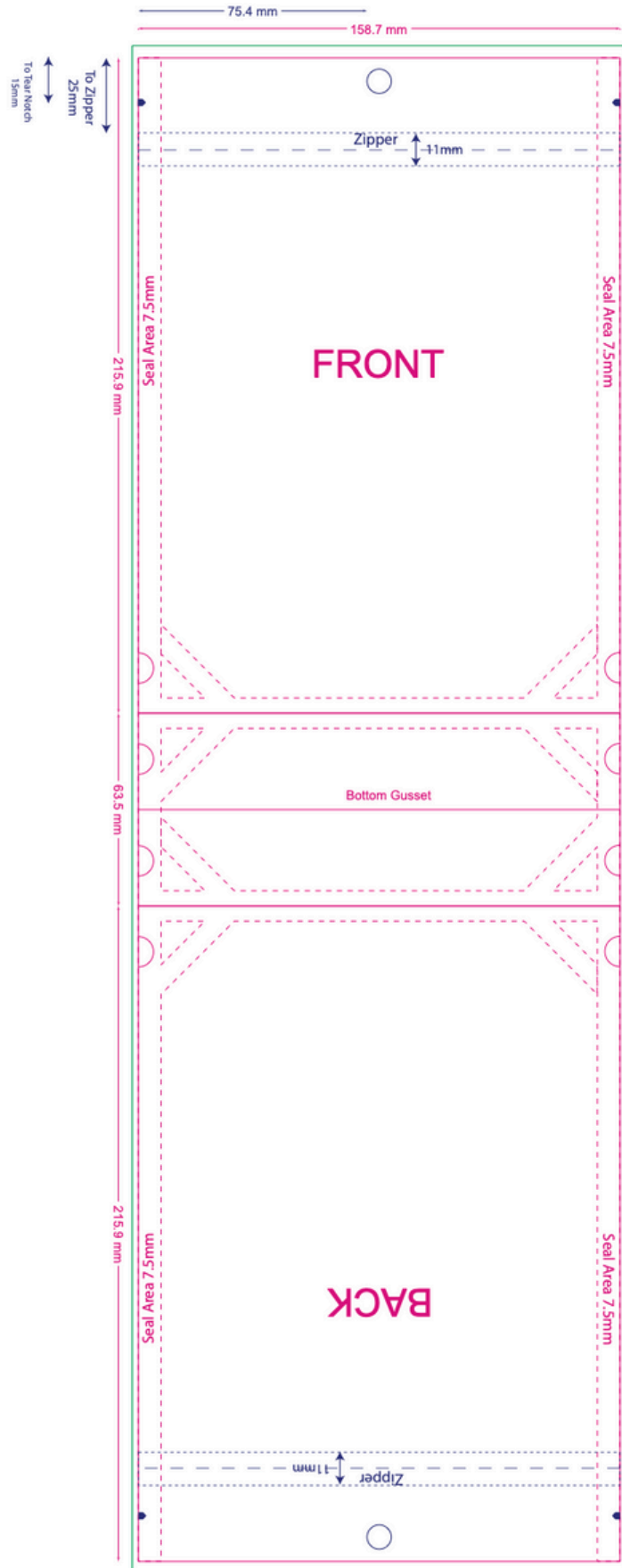
FILE SUBMISSION GUIDELINES

POUCH SETUP

Seal Areas:
Avoid placing critical art or text in these areas as there is risk of distortion.

Features:
Some features can be swapped between different variations or omitted based on user needs. This includes zippers, hang holes, and tear notches.

Bleed Areas:
Artwork should extend 2 mm on the left and right sides and 4 mm on the top and bottom. This will compensate for variance in the trimming process.





FILE SUBMISSION GUIDELINES

POUCH SETUP

Spot varnish on its own layer and spot color separation, set to overprint.

White on its own layer and spot color separation, set to overprint.

Areas needing to be clear or metallic need to be knocked out of white ink layer.

